

CASA168

ON 15TH



1125 E 15th AVE

Cedar Cottage | Mount Pleasant | casa168.ca

SIDHU
REAL ESTATE

778-990-8857
contact@bsidhu.ca
Royal Pacific Realty Kingsway

\$ 1,848,000
MLS# 2883429
Built 2024
1,507 SqFt. Home
221 Sq.Ft. Private
Decks

- 3 Bedrooms
- 3.5 Bathrooms
- Fisher Paykel Gas Stove & Fridge
- Air Conditioning



LIVING AT CASA168 ON 15th

- Elegant interiors designed by BCG
- Hardwood Flooring
- Air Conditioning
- Radiant In-Floor Heat
- Open Concept Floor Plan
- Audio, Security Camera and Alarm
- Private Fenced Yard
- Timeless Tile Selection
- Custom Cabinetry
- Spa-Inspired Bathrooms
- Fisher Paykel Gas Stove & Fridge
- Quartz Countertops
- Single Open Parking
- Bicycle Storage Space
- 2/5/10 Home Warranty

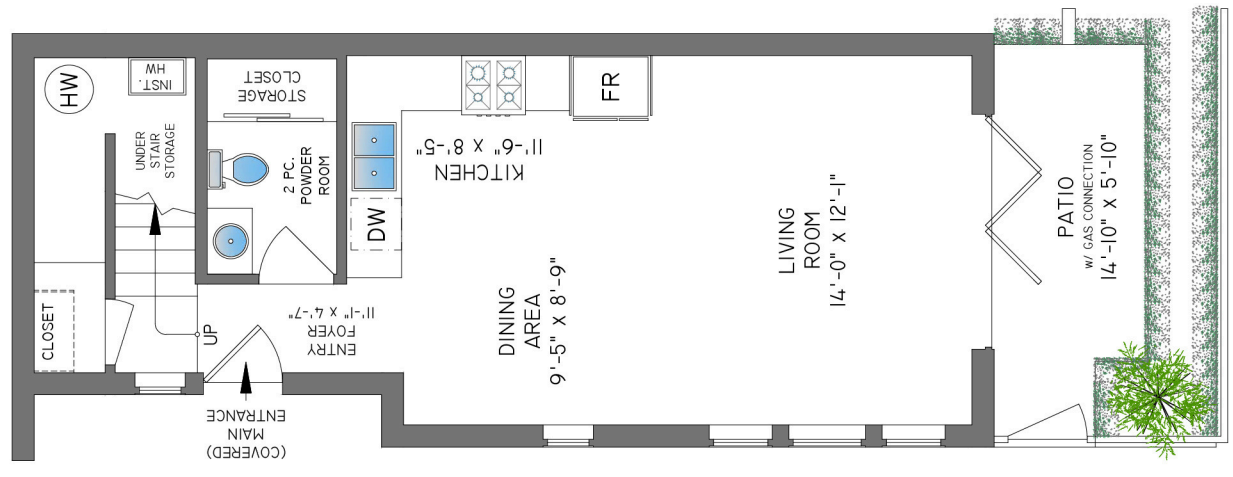




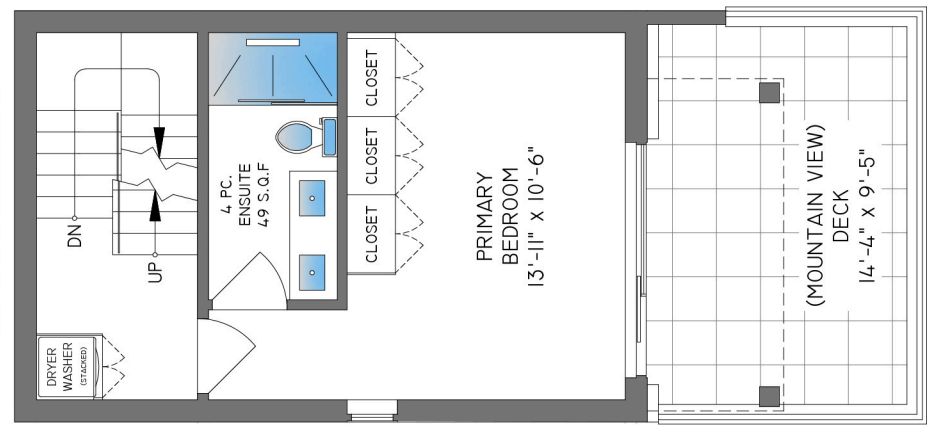
casal68 residences is a collection 5 PREMIUM CITY HOMES NESTLED in vibrant MOUNT PLEASANT EAST community built by TOGOSPICE (2010). This OPEN CONCEPT BACK UNIT offers a MODERN and CONTEMPORARY design which showcases a CHEF'S KITCHEN boasting CUSTOM CABINETRY with QUARTZ COUNTERTOPS complete with FISHER PAYKEL gas stove/fridge/dw & a DINING area. This 3 LEVEL home offers 3 SPACIOUS BEDROOMS complete with 2 PRIVATE MASTER BEDROOMS and each with ENSUITES and a PRIVATE DECK. Other features include DESIGNER PLUMBING fixtures, RADIANT IN-FLOOR heat, A/C, FULL 2-5-10 WARRANTY and a PRIVATE FENCED PATIO. A FANTASTIC location: walking distance to TRENDY EATERIES along MAIN and THE DRIVE, BROADWAY, ERNEST, CHARLES DICKENS ELEM, and PARKS.



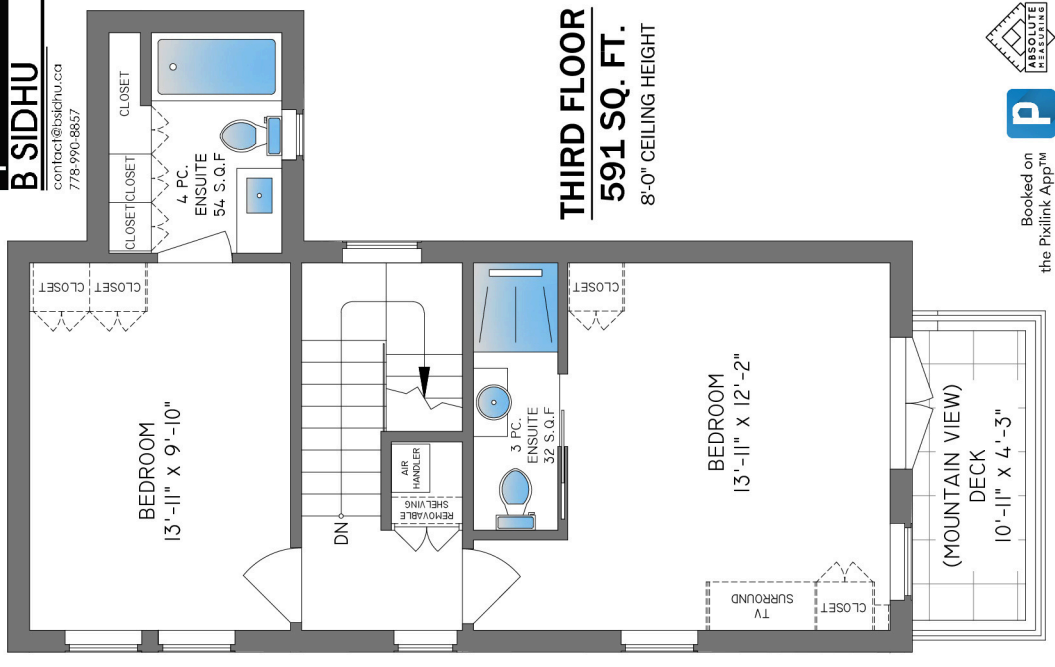
FIRST FLOOR
549 SQ. FT.
 9'-0" CEILING HEIGHT



SECOND FLOOR
367 SQ. FT.
 8'-0" - 9'-0" CEILING HEIGHTS



THIRD FLOOR
591 SQ. FT.
 8'-0" CEILING HEIGHT



1125 E 15TH AVENUE, VANCOUVER

FLOOR	FINISHED	PARKING PAD	DECK/PATIO
FIRST	549	157	142
SECOND	367	-	158
THIRD	591	-	63
TOTAL	1507	157	363



THE REPRESENTED FLOOR PLANS ARE NOT SUITABLE FOR CONSTRUCTION/ARCHITECTURAL PURPOSES. EVERY EFFORT HAS BEEN MADE TO REPRESENT ALL DIMENSIONS ACCURATELY. **NOT TO SCALE**