

CASA168

ON 15TH



1127 E 15th AVE

Detached Coach House | Mount Pleasant | casa168.ca

SIDHU
REAL ESTATE

778-990-8857
contact@bsidhu.ca
Royal Pacific Realty Kingsway

\$ 1,868,000

MLS# 2883659

Built 2024

1,397 SqFt. Home

309 Sq.Ft. Private
Decks

- 3 Bedrooms
- 2.5 Bathrooms
- Fisher Paykel Gas Stove & Fridge
- Air Conditioning



LIVING AT CASA168 ON 15th

- Elegant interiors designed by BCG
- Hardwood Flooring
- Air Conditioning
- Radiant In-Floor Heat
- Open Concept Floor Plan
- Audio, Security Camera and Alarm
- Private Fenced Yard
- Timeless Tile Selection
- Custom Cabinetry
- Spa-Inspired Bathrooms
- Fisher Paykel Gas Stove & Fridge
- Quartz Countertops
- Attached Heated Garage
- Long life Metal Roof
- 2/5/10 Home Warranty





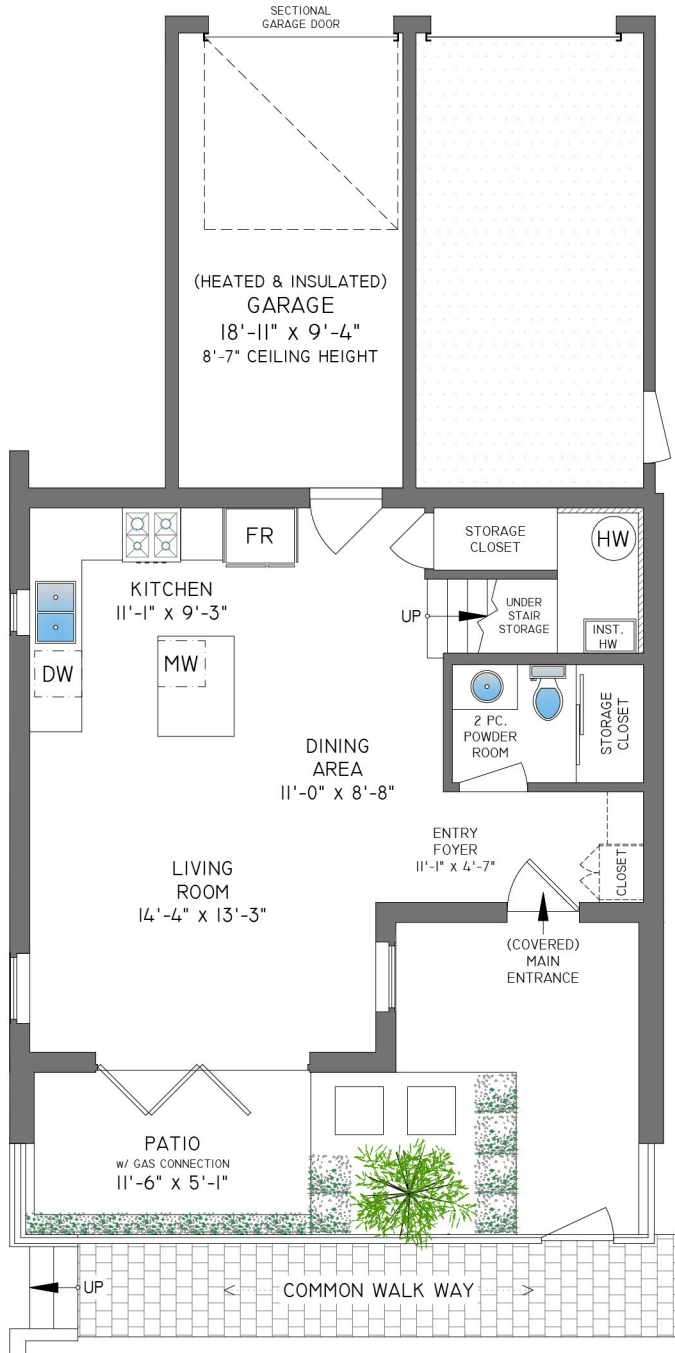
casa168 residences is a collection 5 PREMIUM CITY HOMES NESTLED in vibrant MOUNT PLEASANT EAST community built by TOGOSPICE (2010). This OPEN CONCEPT DETACHED COACH HOUSE offers a MODERN and CONTEMPORARY design which showcases a CHEF'S KITCHEN boasting CUSTOM CABINETRY with QUARTZ COUNTERTOPS complete with a FISHER PAYKEL stove and fridge and an ISLAND.

This 2 LEVEL home offers 3 SPACIOUS BEDROOMS complete with a PRIVATE KING SIZE MASTER BEDROOM with VAULTED CEILINGS and a PRIVATE DECK. Other features include DESIGNER PLUMBING fixtures, RADIANT IN-FLOOR heat, A/C, FULL 2-5-10 WARRANTY and a PRIVATE FENCED PATIO. A FANTASTIC location: walking distance to TRENDY EATERIES along MAIN and THE DRIVE, BROADWAY, ERNEST, CHARLES DICKENS ELEM, and PARKS.

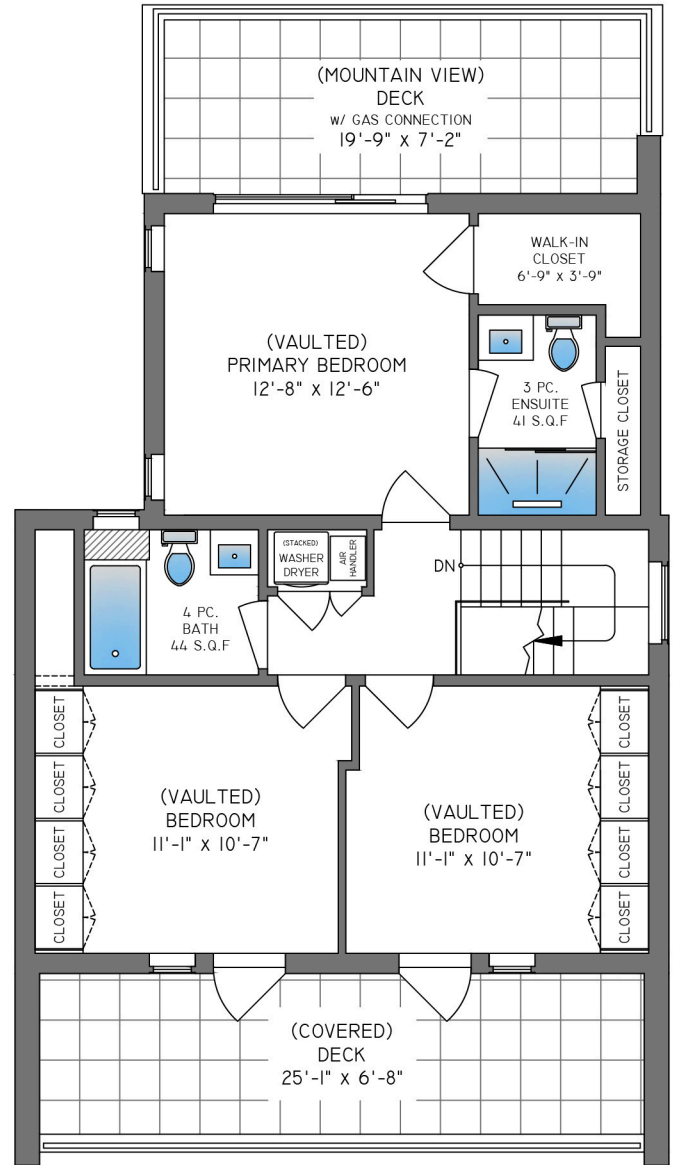


contact@bsidhu.ca
778-990-8857

FIRST FLOOR
591 SQ. FT.
8'-0" CEILING HEIGHT



SECOND FLOOR
806 SQ. FT.
7'-6" - 13'-0" CEILING HEIGHTS



Booked on the Pixilink App™



1127 E 15TH AVENUE, VANCOUVER

FLOOR	AREA (SQ. FT.)		
	FINISHED	GARAGE	DECK/PATIO
FIRST	591	198	234
SECOND	806	-	309
TOTAL	1397	198	543



THE REPRESENTED FLOOR PLANS ARE NOT SUITABLE FOR CONSTRUCTION/ARCHITECTURAL PURPOSES. EVERY EFFORT HAS BEEN MADE TO REPRESENT ALL DIMENSION ACCURATELY. EGO INSURED.