

CASA168 ON 15TH



1125 E 15th AVE

Cedar Cottage | Mount Pleasant | casa168.ca

\$ 1,928,000

Built 2024
1,507 SqFt. Home
221 Sq.Ft. Private
Decks

- 3 Bedrooms
- 3.5 Bathrooms
- Fisher Paykel Gas Stove & Fridge
- Air Conditioning

SIDHU
REAL ESTATE

778-990-8857
contact@bsidhu.ca
Royal Pacific Realty Kingsway



LIVING AT CASA168 ON 15th

- Elegant interiors designed by BCG
- Hardwood Flooring
- Air Conditioning
- Radiant In-Floor Heat
- Open Concept Floor Plan
- Audio, Security Camera and Alarm
- Private Fenced Yard
- Timeless Tile Selection
- Custom Cabinetry
- Spa-Inspired Bathrooms
- Fisher Paykel Gas Stove & Fridge
- Quartz Countertops
- Single Open Parking
- Bicycle Storage Space
- 2/5/10 Home Warranty

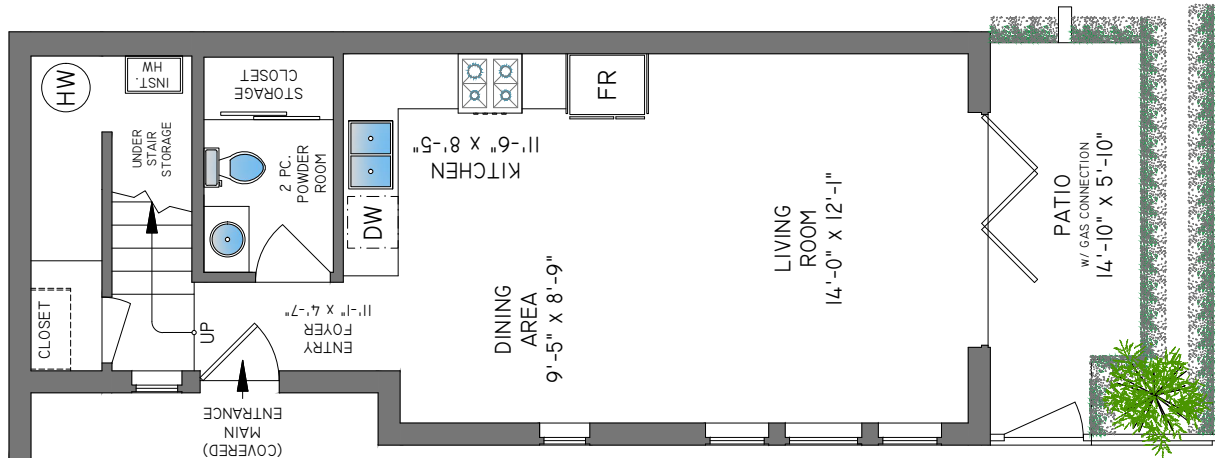




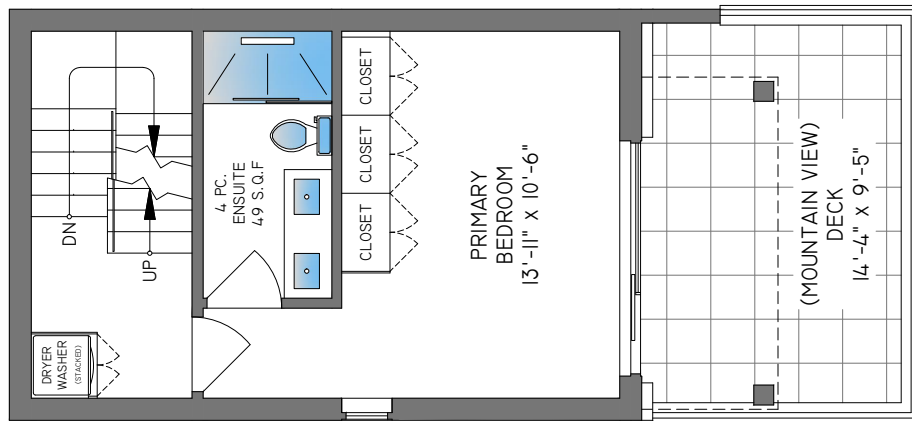
casal68 residences is a collection 5 PREMIUM CITY HOMES NESTLED in vibrant MOUNT PLEASANT EAST community built by TOGOSPICE (2010). This OPEN CONCEPT BACK UNIT offers a MODERN and CONTEMPORARY design which showcases a CHEF'S KITCHEN boasting CUSTOM CABINETRY with QUARTZ COUNTERTOPS complete with FISHER PAYKEL gas stove/fridge/dw & a DINING area. This 3 LEVEL home offers 3 SPACIOUS BEDROOMS complete with 2 PRIVATE MASTER BEDROOMS and each with ENSUITES and a PRIVATE DECK. Other features include DESIGNER PLUMBING fixtures, RADIANT IN-FLOOR heat, A/C, FULL 2-5-10 WARRANTY and a PRIVATED FENCED PATIO. A FANTASTIC location: walking distance to TRENDY EATERIES along MAIN and THE DRIVE, BROADWAY, ERNEST, CHARLES DICKENS ELEM, and PARKS.



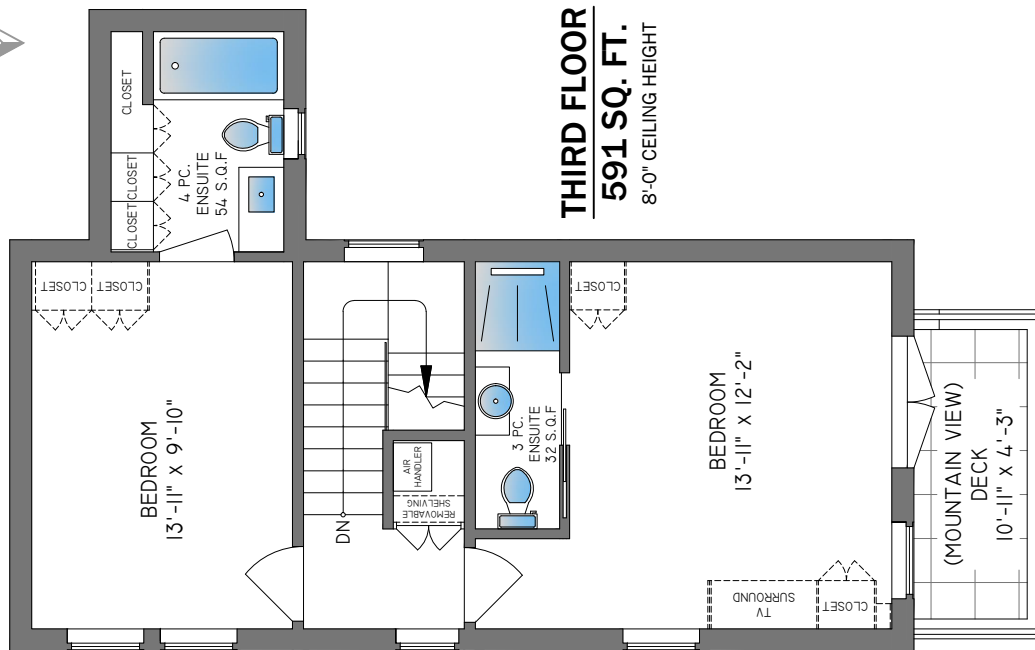
FIRST FLOOR
549 SQ. FT.
 9'-0" CEILING HEIGHT



SECOND FLOOR
367 SQ. FT.
 8'-0" - 9'-0" CEILING HEIGHTS



THIRD FLOOR
591 SQ. FT.
 8'-0" CEILING HEIGHT



| 1125 E 15TH AVENUE, VANCOUVER | | | |
|-------------------------------|-------------|-------------|------------|
| FLOOR | FINISHED | PARKING PAD | DECK/PATIO |
| FIRST | 549 | 157 | 142 |
| SECOND | 367 | - | 158 |
| THIRD | 591 | - | 63 |
| TOTAL | 1507 | 157 | 363 |